

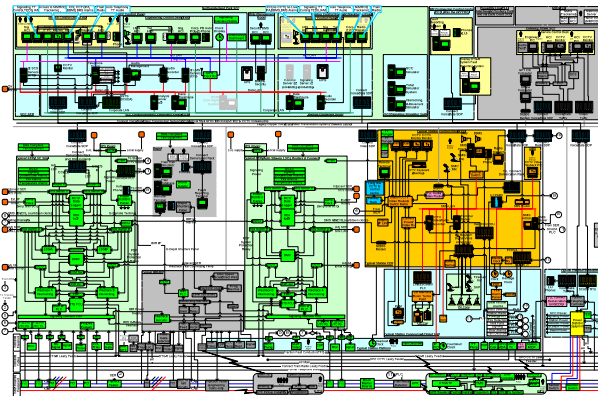


INCOSE UK Chapter – Rail Interest Group

Networking Evening – Theme ‘Railway System Architectures’

1730H for 1800H, Thursday 29th March 2007

The RIG are holding it's first Networking evening to encourage people from all walks of the Railway sector to have an informal, but informed, discussion whilst exchanging business cards!. However, to ensure that System Engineering is never too far off the agenda, we have developed a theme around the evening's events. There will be 4 'corners' at the Venue. Each corner will be representing a unique view of an architecture used in the Railway industry. These include Academia, Civils, Corporate and Supplier. Each representative will encourage debate around their architecture for 20 mins and gather at least 3 key issues. The wrap up sessions shall compare the key issues to gauge commonality or trend. This will be followed by wine and light snacks to continue the healthy debate!



The meeting will take place at Parsons Brinkerhoff's offices at 25 Wilton Road, Victoria, London. Non-members are welcome and there is no charge for attendance but places must be booked in advance as the venue is restricted. To book, obtain directions or for any other questions, please contact the RIG Chair, Bruce Elliott (bruce.elliott@atkinsglobal.com) or +44 (0)7970 694043.

The International Council on Systems Engineering (INCOSE) is an international professional society for systems engineers whose mission is to foster the definition, understanding, and practice of world-class systems engineering in industry, academia, and government. INCOSE was formed in 1992 to develop, nurture, and enhance the interdisciplinary approach and means to enable the realization of successful systems. Since then, INCOSE has grown dramatically. Today there are over 5,000 member systems engineers, 50 chartered chapters worldwide, and more than 40 Corporate Advisory Board members from government, industry, and academia.

The INCOSE UK Rail Interest Group has been formed:

- *To provide a forum for those interested in Systems Engineering in rail to network in a less formal environment, to exchange good practice and to provide mutual support in an area which can require some sustained perseverance;*
- *To promote, improve and share the practice of Systems Engineering within the rail industry;*
- *To foster connections with other professional bodies within rail and thereby promote cross fertilisation of knowledge and experience across sectors and community disciplines; and*
- *To promote awareness of INCOSE UK and encourage membership within the rail industry.*

For further information, see <http://www.incose.org.uk/rig.htm>.